



**PANORAMA**

## VILLA SISTEMI MEDICALI

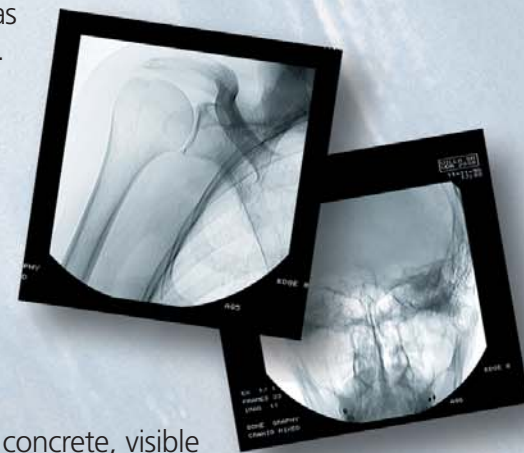
### Fifty years success history



In 2008 Villa Sistemi Medicali S.p.A. celebrates fifty years of fruitful activity in the radiology field. Today Villa Sistemi Medicali asserts itself as the largest Italian manufacturer of medical and dental radiological systems, one of the leaders in the European field, with a solid and extensive distribution network, which assures its presence in over one hundred countries worldwide. Fifty years of innovation and achievements have made the company a reference in the biomedical radiological field, demonstrated by continuous growth in financial results and production volume. Villa maintains a solid reputation for reliability, diagnostic quality and competitiveness, demonstrated daily for forty years by an installed base of tens of thousands of units worldwide.

### Continuous innovation

Accepting the challenge of the next millennium - an increasingly aggressive and quality-conscious market - Villa Sistemi Medicali has successfully undertaken a radical restructuring process. Villa has been certified in conformity with the standard ISO 9001:2000, EN 46001 and ISO 13485. Given its presence in markets worldwide, Villa Sistemi Medicali has developed and manufactured its product lines according to widely accepted international standards (such as CE mark and FDA process). Customers' expectations and needs are the inspiring concepts for the design of Villa's systems, conceived to optimise the answers to the world's demand for radiological devices and to incorporate the technological and clinical "state-of-the-art" in the sector (over 6% of the total Company revenue is yearly devoted to Research & Development).



### Highly qualified partners

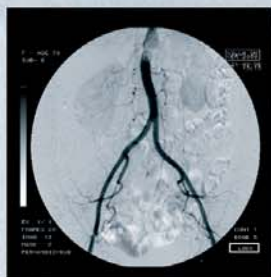
A role as a leading player in the radiological market does not consist solely of a concrete, visible presence with brand name products. Villa Sistemi Medicali has traditionally developed and maintained high level partnerships with other leading companies in the market, with whom it has an ongoing commitment in technical development projects, in a synergic exchange of know-how and products, and in outlining a future strategy in the biomedical field. Villa's ability to interpret and anticipate the trends and demands of a market in continuous evolution is the fruit of these relationships and of a strongly rooted presence in radiology.





### **An extensive growing network**

There is no geographic area worldwide where Villa Sistemi Medicali is not present with a firm representative for commercialization and technical service for its products. It is imperative, in each new working relationship, to make sure that local partners have qualified technical personnel available. This personnel must be assured a regular program of training and technical formation. They must also have a competitive commercial organization, supported by appropriate technical and marketing documentation. Villa Sistemi Medicali specialists can provide qualified information on new x-ray systems, room structure, installation and equipment positioning. A wide network of highly skilled service engineers ensures effective and reliable maintenance of all Villa Sistemi Medicali equipments installed worldwide. Preventive maintenance programs and Service Contracts are adapted to the Customer's needs.



### **A full line of products for radiology**

The company's know-how covers all technologies which make up a modern radiographic examination room - all applications of medical and dental imaging, from the simple needs of screening and emergency rooms to the most advanced digital techniques. Our catalog, with a full line of products and accessories, permits a complete, flexible configuration of radiology systems, adaptable to the most demanding market requirements. Tilting tables, remote controlled systems, flat panel DR systems, conventional radiographic systems, high frequency generators, fluoroscopic devices, digital diagnostic systems, mammography systems and mobile

C arms, but also panoramic and tomographic dental systems, intraoral radiographic systems, together with a vast array of accessories and optional devices, these are the tiles that make up our product mosaic, which we invite you to discover in the following pages.



## REMOTE CONTROLLED SYSTEMS AND DIGITAL RADIOGRAPHY

### *diva-D* DIVA-D

Digital R/F system for X-ray image acquisition, processing and storage. High resolution 1Kx1Kx12 bits CCD camera. Acquisition speed up to 25 images per second and real time hard disk storage of all images. Digital Subtraction Angiography package option. Full Dicom connectivity for seamless integration into PACS networks with Print, Store and Worklist classes.

### *apollo* Apollo

Apollo is the next generation remote controlled R/F system, designed for maximum patient throughput, application flexibility and patient accessibility. The fast, smooth and accurate movements, the complete accessibility and the variable height of the tabletop, reduce the patient preparation time and increase workflow with the additional benefit of improving patient comfort. Standard features include 90/90 tilting, large column scanning range for full patient coverage without longitudinal patient repositioning, spot film device with line and cross divisions and electronic tomography. Apollo can be completed with DIVA-D to exploit the power of Digital Imaging.







## *apollo DRF*

Apollo DRF is an innovative Digital room that matches the flexibility of a remote controlled table with the image quality and speed of new Dynamic Flat Panel detector.

According to the workload and patient workflow requirements, it is possible to instantly switch from general radiographic studies, to high volume chest exams, trauma exams, or contrast studies such as GI, urological and vascular investigations. No more need to use CR plates or film. The new Dynamic Flat Panel detector combines high spatial resolution for general radiography, with the capability of acquiring dynamic sequences and fluoroscopy at high frame rate for GI procedures.



## TILTING R/F SYSTEMS



### *vision* Vision

Tilting R/F table 90/15 with automatic spot film device with line and cross divisions. Can accept image intensifiers up to 12" and it's ready for digital application.

## FLAT PANEL DR SOLUTIONS

### *D-View MP* D-View MP

D-View MP is a Multi-Purpose Direct Digital system for every need of general radiographic and emergency studies. The positioning system is based on a highly flexible combination of an auto-tracking ceiling tubestand, a tiltable detector support and a mobile patient table.



### *DEL-IMS* DEL-IMS

DEL-IMS is the image acquisition and processing platform based on Flat Panel DR technology that provides full functional integration, high image quality and maximum productivity.

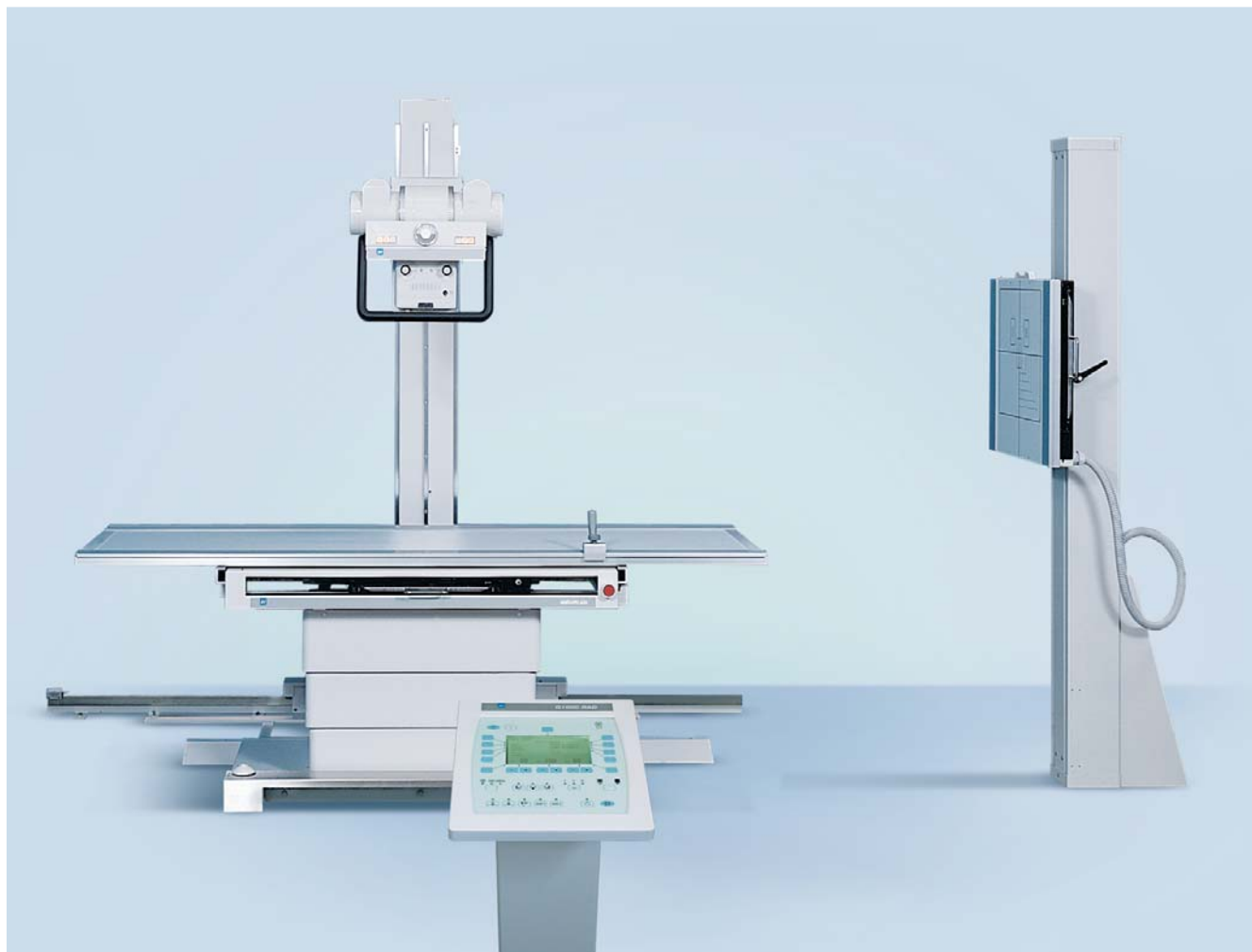


### *U-Arc DRT* U-Arc DRT

U-ARC DRT is a compact and flexible Direct Digital imaging system designed for general radiographic, orthopaedic and ambulatory studies. The compact footprint and the floor mounting make it ideal for private practices and small structures.



## GENERAL RADIOGRAPHIC SYSTEMS



### *moviplan* Moviplan

The range of Moviplan radiographic systems fits every need for general radiographic and emergency rooms.

A wide choice of configurations and options will match your requirement in terms of

performances and budget: fixed or elevating floating table, floor mounted column with linear tomography option, high frequency generators and tubes can be mixed to fit your requirements.

### Chest stands

### *chest stands*

Designed for the highest patient throughput, can be equipped with 35x43 or 40x90 buckies and optional motorized patient footrest and tilting bucky.

### *lem plus* LEM Plus

A ceiling tubestand that, in combination with Moviplan or other diagnostic tables, gives an unsurpassed utilization of the room space and the highest operational efficiency, especially for trauma and emergency rooms.



### *EV650* EV650

EV 650 is a heavy duty elevating table with a patient load up to 295kg. Anti-collision system, auto-tracking and automatic collimation make it ideal for the most demanding hospital environments. EV 650 is also available with Flat Flat DR systems based on the DEL-IMS platform.



## BASIC RADIOGRAPHIC SYSTEM

## COMPONENTS AND ACCESSORIES

## MAMMOGRAPHY



### *multix-S* Multix-S

Basic radiographic system with integrated c-arm stand for X-ray tube and Bucky. Variable Focus to Film distance up to 190 cm. Also suitable for stretcher patient studies.

### *accessories* Accessories

Your diagnostic room can be completed with a wide choice of accessories such as X-ray tubes, image intensifiers, anti-scatter grids, dosimeters and many others.

### *HF generators* HF generators

A wide choice of models for every application. RAD only and RF models from 32 to 80kW with compact design and excellent price performance ratio. The Genius HF-A series, with 65 and 80kW models, is the leading edge in performances for high-end R/F applications.

### *melody* Melody

High frequency mammographic unit with "zero points" automatic exposure control. A sophisticated calibration system ensures high diagnostic quality in every condition. Also available with computerised stereotactic biopsy device.







*arcovis 3000*  
**Arcovis 3000**

Fluoroscopic mobile unit for surgical application, high frequency generator with fixed or rotating anode, CCD camera with wide choice of digital memories.



*visitor AR30*  
**Visitor AR30**

Radiographic mobile unit, 30kW high frequency generator with dual focus rotating anode x-ray tube, anatomical programs. Simple and flexible positioning thanks to the scissors arm tubestand with five movements.



*visitor T5/T30*  
**Visitor T5/T30**

Compact and lightweight mobile units with high frequency generator. T30 version with 30 kW generator and rotating anode X-ray tube. T5 version with 3,3 kW and stationary anode X-ray tube.



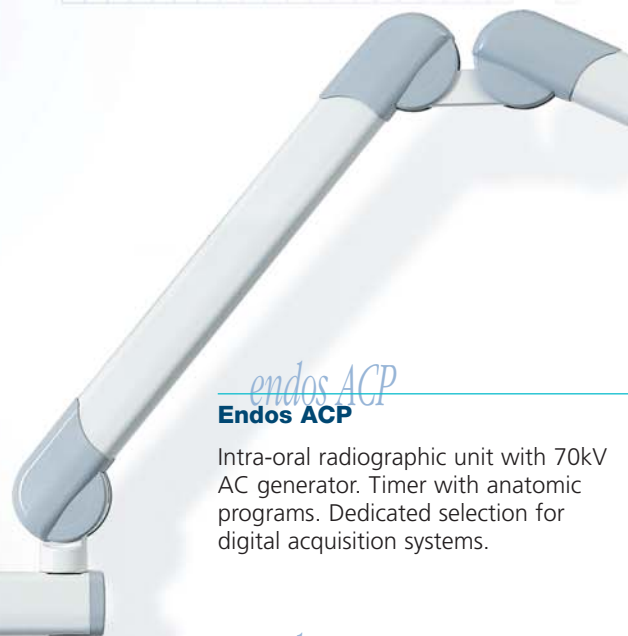


*endos DC*  
**Endos DC**

Intra-oral radiographic unit with 65kV DC generator. DLC technology with dual anode current 4/5mA. Optimization of exposure parameters for four different receptors, with dedicated settings for digital acquisition systems.

All the intraoral units in the Endos line are available with three different extension arm lengths, to fit every room layout.

A choice of accessories is available, including: extension cone for 30 cm focus to skin distance; 35x45mm x-ray field diaphragm; configurations with remote x-ray control.



*endos ACP*  
**Endos ACP**

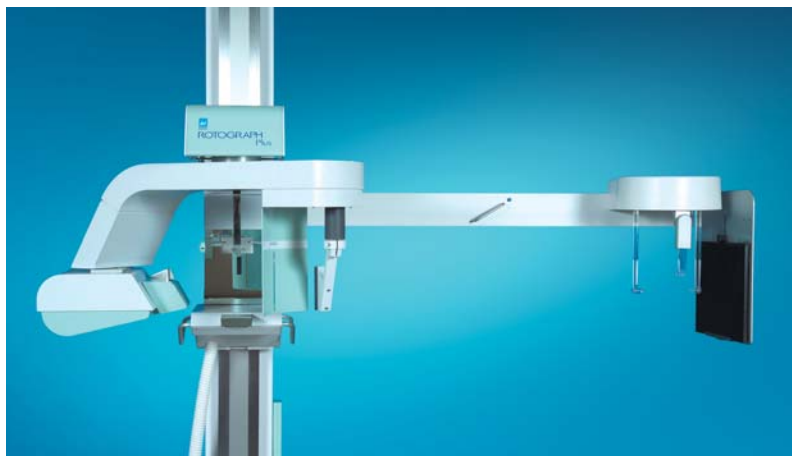
Intra-oral radiographic unit with 70kV AC generator. Timer with anatomic programs. Dedicated selection for digital acquisition systems.

*endos AC*  
**Endos AC**

Intra-oral radiographic unit with 70kV AC generator. Timer with manual selection of exposure time.







*rotograph plus*  
**Rotograph Plus**

Panoramic system, computerized controls for panoramic, sinus, open/close mouth TMJ examination. Optional cephalometric arm. Remote control with alphanumeric display.



*rotograph-D*  
**Rotograph-D**

Digital panoramic system with State-of-the-Art CCD sensor with excellent price/performance ratio. USB 2.0 interface for real time acquisition on PC, direct storage on "Compact Flash®" memory cards.



*strato 2000*  
**Strato 2000**

Panoramic/tomographic system with high frequency generator, flat cassette, automatic collimator, face-to-face patient positioning and laser alignment system. Dedicated exams packages for: PAN, TMJ, SINUS, CEPH, IMPLANT (linear tomography), Advanced Dental Application. The U.C.A. software platform allows the user to upgrade the unit by himself. DMS (Data Management System) to manage exposure data.

*strato 2000 D*  
**Strato 2000 D**

Digital panoramic system with high resolution CCD sensor. Direct acquisition on PC through a USB 2.0 connection or standalone acquisition on "Compact Flash®" memory cards. High frequency generator, face-to-face patient positioning and laser pointers.



## Villa Sistemi Medicali long-standing experience at the service of our customers



### KNOWHOW, ORGANIZATION, PRODUCTS, SERVICES THESE ARE THE TILES THAT BUILDS-UP OUR MOSAIC OF PROPOSALS.

#### Competence in x-ray systems

Villa Sistemi Medicali specialists can provide qualified information on new x-ray systems, room structure and installation and equipment positioning.

#### Logistic services: a widespread presence

Spare parts, accessories and consumables are shipped daily by Villa Sistemi Medicali to all its customers worldwide.

#### Our priority: Technical Service

A wide network of highly skilled service engineers ensures effective and reliable maintenance of all Villa Sistemi Medicali equipment installed worldwide. Preventive maintenance programs and Service Contracts are adapted to the needs of our customers.

#### A wide range of equipment

- Digital radiographic and angiographic systems
- Remote controlled tables
- Classical tilting tables
- General rad floating tables
- Chest stands
- Mobile units
- Surgical C arms
- HF Generators
- Dental units, Intra-oral and panoramic